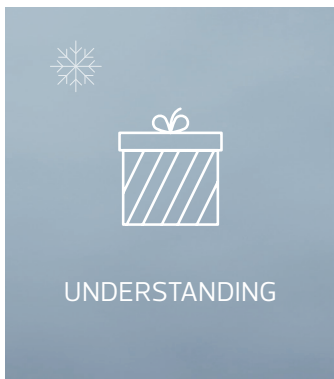
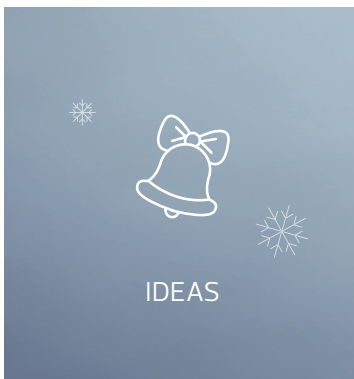


❄️
CLIENT NEWSLETTER
 DECEMBER 2016 ❄️



SEASON'S GREETINGS FROM RSM

ALBANY OFFICE UPDATE

As another year draws to a close, two of our team have taken a break before Christmas. Dean Carnaby is now on long service leave and is currently travelling through the US with his wife and daughter with plans to spend Christmas with Dean's sister in Florida.

Fiona Burdett and her husband Karl are celebrating their 25th wedding anniversary by spending three weeks in Cambodia volunteering their time helping to construct school buildings. Fiona and Karl have had to fundraise and contribute their own funds towards materials for the project.

Our office will be closed from 23 December 2016 and re-open on Tuesday 3rd January 2017. We wish you all a very Merry Christmas and a safe and prosperous New Year.

Southern Regional TAFE visit

We recently hosted a group of TAFE Advanced Diploma of Accounting students who are nearing the end of their studies and wanted to know more about life in the accounting world. James Rurenga and Jo Gilbert shared lunch with the group where James shared his own personal story having joined us straight out of TAFE over 6 years ago then Jo shared a bit more about RSM, what we look for in our recruits and exciting changes in the accounting and tax world (or exciting to us anyway).



RE-INTRODUCING THE ALBANY TEAM



Jo Gilbert
 Prinicpal



Dean Carnaby
 Senior Accountant



Georgia Kidman
 Accountant



James Rurenga
 Accountant - Super



Heather Henderson
 Assistant Accountant



Fiona Burdett
 Receptionist



Helen Harness
 Office Administrator



Paul Griffiths
 Admin - Super



Wendy Dickson
 Admin - Super





SUPERANNUATION AND BUDGET REFORMS COMING 1 JULY 2017

On 9 November 2016 the Fair and Sustainable Superannuation Bill 2016 passed both the House of Representatives and the Senate. This bill enacted many of the announcements made on budget night 2016 regarding superannuation.

From 1 July 2017 concessional contributions will be capped at \$25,000, down from the current \$35,000 for over 50's and \$30,000 for those under 50. There was some good news in that the 10% rule will be removed for those who receive employer mandated contributions. For example, from 1 July 2017 if you receive \$10,000 as employer superannuation guarantee 9.5% contributions you will then be able to make an additional contribution of \$15,000 which you can claim as a deduction for in your personal tax return.

As long as your member balance is under \$1.6m you can also make a non-concessional contribution of \$100,000. If your member balance is over this limit you will be unable to make this contribution. Unfortunately one of the announcements from budget night has been dropped. People who are aged 65 years or older at 1 July 2017 will still need to pass the work test to be eligible to make contributions. This is a declaration to state that you have worked at least 40 hours in a 30 day period.

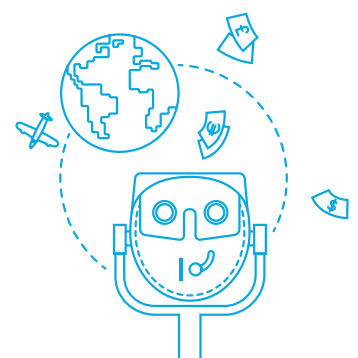
For the financial year ended 30 June 2017, the existing caps still apply. This means that you can make up to \$35,000 as a concessional / employer contribution depending on your age, as well as \$180,000 as a non-concessional contribution.

DEALING WITH THE IMPACT OF FROST

A lot of our farming clients were affected by frost, and we understand the financial and emotional impact this will have on the farm and the family. There are a number of things you can do to deal with the effects of frost:

- Act early if frost damage had a serious financial impact
- Contact your banking institution as soon as possible to start working through your situation and secure financial arrangements for next season
- Prepare a budget and future business plan to help you make important decisions for next year
- Develop a written plan of your proposed actions and review it as your situation and circumstances change
- Every farmers situation is different, so base your action plan and decisions to suit your own circumstances
- Organise a tax planning meeting with your accountant to discuss your tax situation. There are a number of tax planning strategies we can implement, including possibly varying your PAYG instalments
- Assess the personal and emotional impact. Frost can trigger feelings of depression, grief and loss. Maintain contact with family, friends and colleagues and seek professional advice if necessary

We at RSM are here to support you in any way we can, so please give us a call if we can be of any assistance. If you feel that you require urgent support please contact Lifeline 13 11 14



Ideas and insight, collaboration
and understanding.

WORKING HOLIDAY MAKER REFORM (BACKPACKER'S TAX)

Imagine you are a humble traveller from afar and you have come to Australia with all the right visa's to experience all there is to experience in Australia. You find yourself on a farm during the perfect season for picking fruit avoiding all the snakes and spiders (apparently they're poisonous). All is going well until tax time arrives, you self-assess and discover you are a non-resident for tax purposes and you now have to pay 32.5% tax on your Australian source income from the first \$1.

Well there is some good news. As of the 5th of December the Working Holiday Maker Reform, commonly referred to as the Backpacker's Tax, has received Royal Assent with changes to come into effect as of 1 January 2017. What this means is, if and while you meet the criteria of a working holiday maker your taxable income is now subject to new tax rates. For taxable income less than \$37,000 the new rate is 15%, see the table below for all the rates.

Taxable Income	Tax Rate
Less than \$37,000	15%
Exceeds \$37,000 but does not exceed \$87,000	32.5%
Exceeds \$87,000 but does not exceed \$180,000	37%
Exceeds \$180,000*	45%

*Does not include temporary budget repair levy.

To meet the criteria of a working holiday maker, you are an individual holding one of the following temporary visas:

- Subclass 417 (working holiday) visa
- Subclass 462 (work and holiday) visa

A working holiday maker may also be an individual who holds a bridging visa permitting the individual to work in Australia if:

- The bridging visa was granted under the Migration Act 1958 in relation to an application for one of the visas referred to above
- The Immigration Ministers decision on that application is yet to be made
- The most recent visa, other than a bridging visa, held by the individual was a subclass 417 (working holiday) visa or subclass 462 (work and holiday) visa

If a working holiday maker only qualifies for part of the year then only the income during the time they qualified is subject to the above rates; as for the balance of the time, they will need to self-assess on a full year basis whether they are subject to the resident or non-resident tax rates.

There is also mention that employers may need to register with the commissioner if they employ working holiday makers, however, this hasn't been refined or rolled out so it is a case of watch this space.

For further information contact:

RSM
61 Peels Place Albany WA 6330
T (08) 98412766
www.rsm.com.au/albany

THE POWER OF BEING UNDERSTOOD

AUDIT | TAX | CONSULTING

RSM Australia Pty Ltd is a member of the RSM network and trades as RSM. RSM is the trading name used by the members of the RSM network.

Each member of the RSM network is an independent accounting and consulting firm each of which practices in its own right. The RSM network is not itself a separate legal entity of any description in any jurisdiction.

The RSM network is administered by RSM International Limited, a company registered in England and Wales (company number 4040598) whose registered office is at 50 Cannon Street, 2nd Floor, London EC4N 6JJ.

The brand and trademark RSM and other intellectual property rights used by members of the network are owned by RSM International Association, an association governed by article 60 et seq of the Civil Code of Switzerland whose seat is in Zug.

© RSM International Association

rsm.com.au

Liability limited by a scheme approved under professional standards legislation

