



ACTUARIAL SERVICES

VALUATION OF EMPLOYEE LIABILITIES

ANTICIPATE YOUR RISKS, STEER THE FUTURE



RSM WORLDWIDE

As the 6th largest network worldwide, RSM offers you global coverage and tailored, seamless support. We bring you a partnership vision and a collaborative approach.

PROXIMITY RELATION

Our experts, with the support of more than 1,100 employees in France, are true business partners at your service alongside the partner in all phases of your development, providing you with their expertise, experience and attention to detail in order to offer you pragmatic solutions tailored to your specific needs.

INTERNATIONAL

43 000

People

810

Offices

120

Country

5,74

US \$ billion in revenue
(2019)



RSM

IN FRANCE

1 100

People

12

Locations

6

Regions

115

Million € in revenue
(2019)

TRUSTWORTHY PARTNER

RSM is a major player in the market and sits on French and international standard-setting bodies. Our experts are mobilized to support all our clients in accounting, financial and technical issues, particularly in the insurance and banking sectors, in order to identify, model and manage risks arising from uncertain events. In order to offer you the solutions best suited to your challenges and the best market practices, our teams provide continuous technical and regulatory monitoring of your economic environment.

ENTREPRENEURIAL MINDSET

The RSM partner, an entrepreneur himself, works proactively and creatively to build a unique relationship with you.

Our multi-disciplinary organisation enables us to combine our business expertise and sector skills in order to anticipate changes in your Group.



VALUATION OF SOCIAL LIABILITIES

RSM's Actuarial division assists its clients with technical and financial issues, particularly in the banking and insurance sectors, in order to identify, model and manage risks arising from uncertain events.



Our experts support and advise all companies in the actuarial valuation, the analysis of actuarial differences and the French GAAP and IFRS accounting treatment of employee benefit obligations.

All companies are subject to accounting, economic and financial reporting requirements as a result of accounting regulations and IAS standards, in particular IAS 19.

Actuarial Services of RSM, with the strength of its expertise, assists a number of client companies in assessing their social commitments in the context of the production of their financial reports of the corporate and/or consolidated accounts.

Our solutions adapt to your account production schedule, whatever the frequency. As a result, our experts are able to support you regardless of your accounting closing constraints.

During the valuation process and all actuarial calculations, our standard service offer is divided into several steps:

- The analysis, monitoring and quality control of your data;
- The development or review of your actuarial assumptions;
- Determination of financial assumptions;
- The calculation of actuarial commitments;
- The analysis of actuarial differences and associated sensitivity studies;
- The drafting of an actuarial report.

In addition, we also offer :

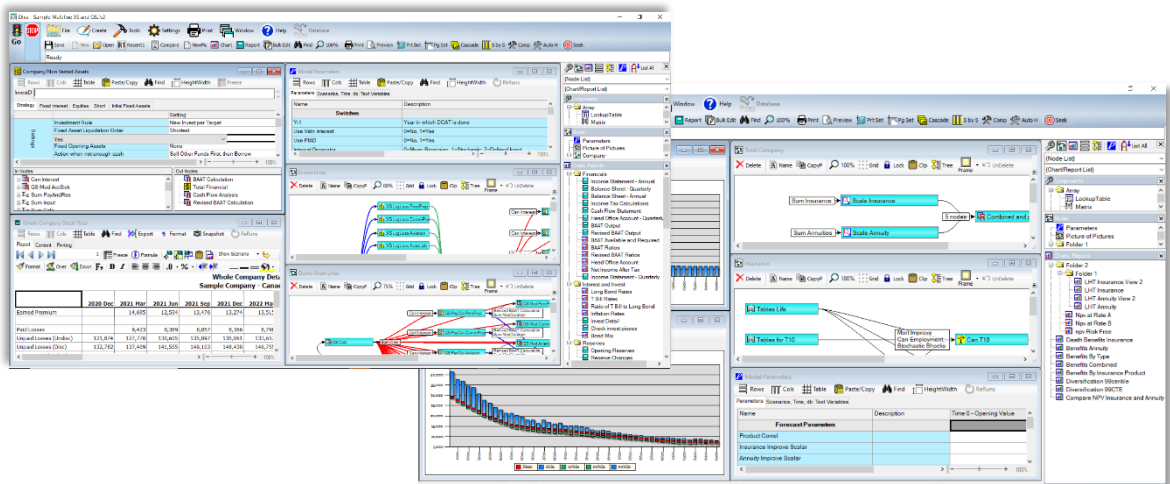
- Availability of audit trails to your statutory auditors;
- Prospective analyses on the evolution of your commitments based on economic and financial scenarios studied upstream;
- Comparative studies of conventional schemes to assist you in your procedures;
- Review of their actuarial assumptions (turnover, career profile and/or mortality studies, etc.);
- The study of demographic and salary movements between two accounting closures; Training modules.

The DIVA software package is a dynamic software package for financial modelling and risk management in actuarial sciences.

DIVA has been designed from the ground up to support the operation of insurance companies.

DIVA: Risk modeling software

Our studies are carried out using the **DIVA** software, a high-performance, multi-standard prospective actuarial tool that has been acclaimed by many clients.



ACTUARIAL SERVICES IS AT YOUR SIDE

Our experts provide you with expert support for your statutory auditors, your management or bodies and your departments in charge of assessing social commitments.



A team of actuarial experts in accounting and financial standards



Regular monitoring of conventional rules



Market references acquired over many years



Compliance with the Data Protection Regulation (RGPD) ;



Compliance with professional standards



Rigorous quality control of services



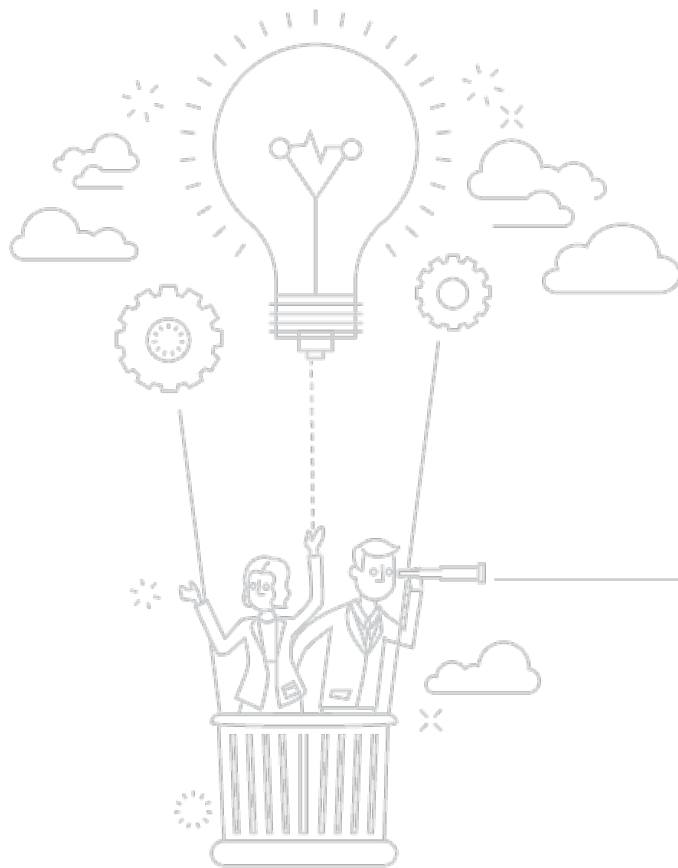
A technical and regulatory watch shared with our customers



Application of proven methods and processes



The use of a powerful and recognized multi-standard actuarial modeling tool.



EXPERIENCE RSM

RSM

26 Rue Cambacérés
75008 Paris

www.rsmfrance.fr

RSM France is the brand used by a network of independent accounting and consulting firms, each of which practices in its own right. The network is not itself a separate legal entity of any description in any jurisdiction.

The network is administered by RSM International Limited, a company registered in England and Wales (company number 4040598) whose registered office is at 50 Cannon Street, London EC4N6JJ, United Kingdom.

The brand and trademark RSM and other intellectual property rights used by members of the network are owned by RSM International Association, an association governed by article 60 et seq of the Civil Code of Switzerland whose seat is in Zug.

© RSM International Association, 2020.

THE POWER OF BEING UNDERSTOOD
AUDIT | EXPERTISE | CONSEIL

