

Sandeep

One of the
RSM team



Bringing you insights to
help you move forward
with confidence



At RSM, we help clients overcome new challenges,
embrace change and adapt to thrive.

By working together, creating deep insights,
combining world-class technology and real-world experience,
we deliver understanding that's unmatched, and confidence that builds.

For a changing world. For the future. For all.

RSM's 2024 Global Financial Results

RSM

HIGHLIGHTS

Revenue growth

of 6%* to US\$10bn**

* 2023 global fee income US\$9.4bn

** Revenue growth percentage calculated using constant currency conversions

RSM statistics



65,000

People worldwide



900

Offices



120

Countries

Service line revenue split

32%

Assurance

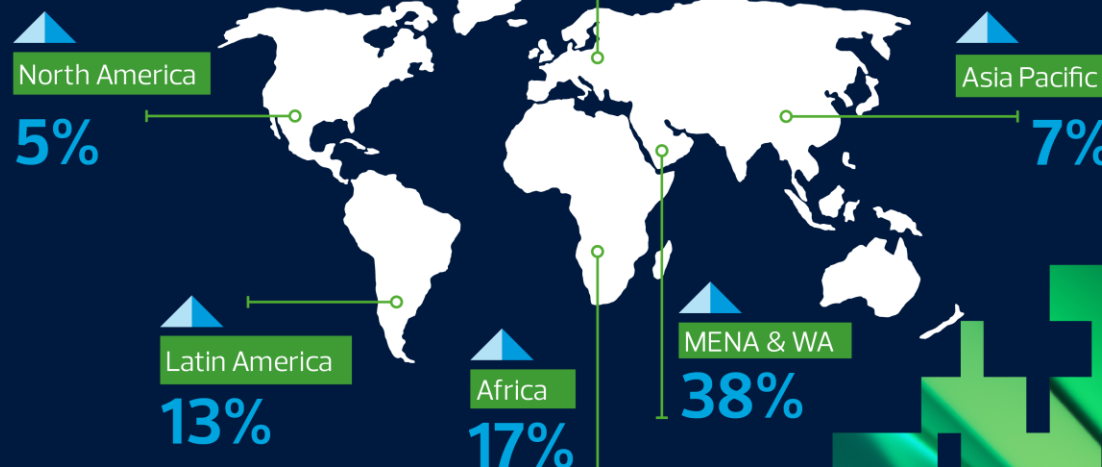
29%

Tax

39%

Consulting

Growth by region



With 40 years of presence in Indonesia,
we have evolved into an integrated professional services firm,
assisting clients with assurance, tax, and consulting.

We are proud to be deemed as the #5 professional services firm in Indonesia.



In support of:

**WOMEN'S
EMPOWERMENT
PRINCIPLES**

Established by UN Women and the
UN Global Compact Office

CERTIFIED
ISO 27001



AA1000
Licensed Assurance Provider
001-057

**Great
Place
To
Work®**

Certified
SEP 2025-SEP 2026
IDN™

Our Services in Indonesia

ACCOUNTING & REPORTING ADVISORY

Complex Accounting & Reporting | Cost & Management Accounting |
New Accounting Standards & Implementation |

AUDIT

Agreed Upon Procedures | Financial Information Review | General Audit |

BUSINESS & CORPORATE SERVICES

Accounting Services | Business Establishment & Licensing |
Corporate Secretarial | Financial Outsourcing Services | Liquidations | Payroll |

CORPORATE FINANCE & TRANSACTION ADVISORY

Corporate Finance | Corporate Recovery & Insolvency | Restructuring |
Valuation |

GOVERNANCE RISK CONTROL CONSULTING

ESG & Sustainability | Fraud Prevention | Governance | Internal Audit |
Risk Management | Security & Privacy Risk | Technology Risk |

MANAGEMENT CONSULTING

Finance & Performance | Transformation |

TAX

Business Tax | International Tax | Merger & Acquisition | Tax Compliance |
Tax Dispute Resolution | Transfer Pricing |

TECHNOLOGY CONSULTING

Artificial Intelligence & Data Analytics | Digital & Technology Integration |
Enterprise Technology | Technology Infrastructure |

THE POWER OF BEING UNDERSTOOD
ASSURANCE | TAX | CONSULTING



RSM Indonesia

Plaza ASIA Level 10,
Jl. Jend. Sudirman Kav.59
Jakarta 12190
Indonesia
T +62 21 5140 1340
E inquiry@rsm.id
rsm.id

RSM in Indonesia is represented by KAP Amir Abadi Jusuf, Aryanto, Mawar & Rekan, PT RSM Indonesia Konsultan, PT RSM Indonesia Mitradaya, PT RSM Indonesia Mitradana, PT RSM Indonesia Advisor, member of the RSM network. RSM is the trading name used by the members of the RSM network. Each member of the RSM network is an independent assurance, tax and consulting firm each of which practices in its own right.

The RSM network is not itself a separate legal entity of any description in any jurisdiction. The RSM network is administered by RSM International Limited, a company registered in England and Wales (company number 4040598) whose registered office is at 200 Aldersgate Street, London, EC1A4HD, United Kingdom. The brand and trademark RSM and other intellectual property rights used by members of the Network are owned by RSM International Association, an association governed by article 60 et seq of the Civil Code of Switzerland whose seat is in Zug.

© RSM Indonesia, 2025