



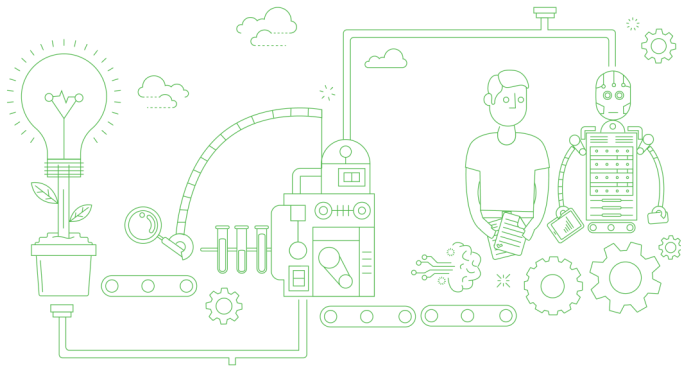
ROBOTIC PROCESS AUTOMATION

Process automation implementation can help eliminate tedious, manual tasks, allowing your organization to focus on high value-added activities that require more nuanced analysis, judgement and critical thinking. The result? Operational efficiency and value add to your bottom line.

THE POWER OF BEING UNDERSTOOD
AUDIT | TAX | CONSULTING



RPA: opportunities and implications for your businesses.



If you've not yet heard about Robotic Process Automation (RPA), then you soon will have.

RPA is a type of Artificial Intelligence (AI) technology that can replicate the actions involved in monotonous and repetitive business processes.

This technology has the potential to create significant opportunities for businesses both operationally and strategically.

This is not science-fiction, it is happening now.

Guidelines for companies looking to explore RPA

Look around

Every organization has manual, error-prone processes. Maybe you receive customer orders via email, check inventory on a supplier's web portal, and combine that information to determine when you can schedule that new order within your system. Or maybe you take data feeds from two disconnected systems, combine and manipulate the data, and feed the output back into another system. Often, these are highly repetitive tasks, are performed by several employees across different units, and the risk of manual error is significant. These manual and error-prone processes typically cause disruptions in the quality and speed with which you serve your customers.

Start small

Successfully implementing RPA takes some coordination and change management. Start with a pilot process to understand how RPA works and how to best integrate it into your organization. Evaluate that pilot, learn from it, and modify your larger implementation.

Don't automate bad process

It's tempting to apply RPA everywhere. However, there are a number of processes that can be streamlined before they're automated. Streamlining can reduce the number of "bots" you need, which reduces your cost and further increases your ROI. Implementing RPA provides a perfect opportunity to think critically about each process and look for ways to drive efficiency throughout your organization.

How RSM can help?



RPA is a realistic concept, but it takes planning and coordination to make an effective implementation happen. We can help you to:

- Identify and prioritize process for automation
- Streamline process to become automate-ready
- Assist in selection of RPA software platform
- Implementation of RPA to support integration
- Project management on your RPA initiative

Contact our office for an immediate response.

Plaza ASIA Level 10
Jl. Jend. Sudirman Kav.59 Jakarta 12190 Indonesia
T: +62 21 5140 1340 E: inquiry@rsm.id
www.rsm.id