

THE POWER OF BEING UNDERSTOOD
ASSURANCE | TAX | CONSULTING



RSM Eastern Africa

Company Profile

Experience the Power of Being Understood

At RSM, we deliver The Power of Being Understood to our clients, colleagues and the community.

The business world is evolving rapidly. Through advances in technology, communications and infrastructure, business barriers are disappearing and each day, we become ever more global.

In this fast-paced environment, you need an advisor that thinks ahead and rapidly responds to your changing needs. At RSM, we build strong relationships based on a deep understanding of what matters most to our clients.

In a world of complexity and uncertainty, change is both inevitable and vital. We exist to empower our clients and our people for the future and give them the confidence to **Take Charge of Change.**

Our Purpose, Values and Promise



This is the POWER OF BEING UNDERSTOOD. This is the RSM experience and our commitment to you.

Our Global Presence

Americas

A Magnet for Business and Innovation

The Americas, home to some of the world's largest economies, provide a stable environment, advanced infrastructure, and abundant resources. As the leading adviser to the middle market, RSM supports clients in leveraging the region's strengths to drive sustainable growth and long-term success.

EMEA

Navigating Complexity, Unlocking Opportunity

Europe, the Middle East, and Africa offer diverse markets with immense potential but also complex regulations and varied economic landscapes. RSM's professionals in the region provide local expertise and regional insights, helping businesses anticipate challenges, adapt quickly, and thrive in one of the world's most dynamic markets.

Asia Pacific

Accessing the Purchasing Powerhouse

The Asia Pacific region is a dynamic and diverse region, home to economies at various stages of growth. RSM's strong presence and local expertise help businesses navigate unique regulatory, legal, and cultural environments, unlocking opportunities and driving success in this economic powerhouse.

RSM Statistics



56,000
people* worldwide



500
offices



120
countries

RSM in EMEA

RSM's 2025 Global Financial Results

Statistics

17,040 PEOPLE

225 OFFICES

75 COUNTRIES

Positive Growth



12.6%* recorded in 2025
in EMEA

*Revenue growth percentage calculated using constant currency conversions

RSM Eastern Africa



6 Partners
/ Directors



130+ Minds



20+ years



Gender equality

Male - 53%

Female - 47%



3 Offices

- Nairobi
- Mombasa
- Kampala



E.J. Nedder
CEO, RSM International

“

RSM has not just been adapting to the present, it has been building a stronger, more resilient network for the future. Our focus on collaboration, innovation, and client service has positioned us to thrive in an ever-evolving global market. Connected leadership across borders, cultures and perspectives has been, and continues to be, fundamental to RSM and its clients' successes. As RSM looks ahead to 2026, we remain confident not only in our ability to navigate challenges, but also to seize opportunities.

OUR SERVICES

ASSURANCE

- STATUTORY AUDITS INCLUDING LISTED COMPANIES
- REVIEWS AND COMPILATION ENGAGEMENTS
- INTERNATIONAL FINANCIAL REPORTING STANDARDS (IFRS) SUPPORT AND IMPLEMENTATION GUIDANCE
- AUDITS AND REVIEWS OF PUBLIC SECTOR DONOR-FUNDED PROJECTS

MANAGEMENT CONSULTING

- CORPORATE STRATEGY
- GOVERNANCE
- BUSINESS REVIEWS
- FAMILY BUSINESS AND SUCCESSION PLANNING
- DOCUMENTING POLICIES AND PROCEDURES
- REVIEW OF MANAGEMENT INFORMATION SYSTEMS
- DESIGN AND IMPLEMENTATION OF ACCOUNTING SYSTEMS
- PREPARATION OF ACCOUNTING MANUALS
- ESG CONSULTING SERVICES

RISK ADVISORY

- INTERNAL AUDITS
- INVESTIGATION AND FORENSIC ACCOUNTING SERVICES
- INFORMATION TECHNOLOGY AND SYSTEMS AUDITS

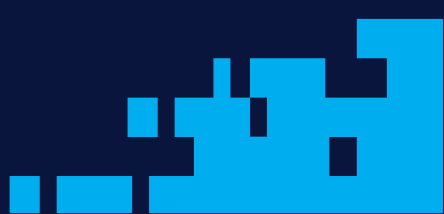
TAX SERVICES

- CORPORATE AND PERSONAL TAX FILING AND COMPLIANCE SUPPORT
- HEALTH CHECKS AND TAX DUE DILIGENCE
- INTERNATIONAL TAX AND TRANSFER PRICING
- TAX ADVISORY INCLUDING CORPORATE RESTRUCTURING
- MANAGING REVENUE AUTHORITY AND TAX DISPUTE RESOLUTIONS
- INDIRECT TAX COMPLIANCE SUPPORT
- TAX REFUND APPLICATIONS

OUTSOURCING

- BOOKKEEPING
- MANAGEMENT ACCOUNTS (REPORTING)
- PAYROLL SERVICES
- GRANT MANAGEMENT
- BUDGETING AND CASH FLOW FORECASTING
- SECONDMENTS
- CAPACITY BUILDING AND TRAINING

TRANSACTION ADVISORY

- MERGERS AND ACQUISITIONS
 - DUE DILIGENCE
 - VALUATIONS
 - TRANSACTION SUPPORT AND LEGAL CONTRACT REVIEWS
 - LITIGATION SUPPORT
 - CORPORATE RESTRUCTURING AND TURNAROUND
- 

Mehtab

One of the
RSM team



We are compelling to our clients and our people, digital in our approaches, and global in our mindset. Through this, we bring together the full power of our global organisation and ensure our future success.

Regional Team



ASHIF KASSAM

FCPA (K), FCCA, CPA (U),
CPA (T), MCI Arb

Executive Chairman

Kenya

Started his career in the accountancy profession in 1994. Ashif is a seasoned professional with diverse experience across specialisations and industry sectors. He helps growth-focused organisations create value, navigate succession challenges and develop acquisition and exit strategies. He has been a member on the International Audit and Assurance Standards Board (IAASB) and has served on diverse boards with experience in corporate governance, family businesses, corporate restructuring and transaction advisory, combining his unique experience in accounting, taxation, valuation and transaction support.

Specialisations: Audit & assurance, transaction advisory, taxation and transfer pricing, management consulting and risk advisory.



SIMON FISHER

MA, FCPA (K), FCA (E&W)

Consultant

Kenya

Started his career in the accountancy profession in 1971 and has substantial technical expertise in International Financial Reporting Standards. He has contributed to various boards & committees to help develop governance practices and accounting policies and procedures and has also undertaken responsibility for training, risk management and quality assurance.

Specialisations: Audit & assurance, International Financial Reporting Standards (IFRS) guidance and corporate governance.



ELVIS OGETO

BCom, CPA (K)

Managing Partner

Kenya

Started his career in the accountancy profession in 1999 and has experience in a diverse range of sectors in the Eastern Africa region and the Republic of Ireland. He is a member of the Institute of Certified Public Accountants of Kenya (ICPAK) work group that developed the Trainee Accountants Practical Experience Framework (TAPEF). He heads the RSM Nairobi office and is also responsible for ethics and independence in Eastern Africa.

Specialisations: Audit & assurance including audits of listed companies, International Financial Reporting Standards (IFRS) guidance, revenue assurance, internal audits, investigation & forensic accounting services and financial due diligence.



JOHN WALABYEKI

BStat, CPA (U), FCCA, ARM

Managing Partner
Uganda

Started his career in the accountancy profession in 1997 and is one of the founding partners of the Uganda firm. He has extensive audit and assurance, taxation and business process outsourcing experience in Uganda, Tanzania, Bermuda and the UK. He is experienced in various sectors including financial services, manufacturing, trading, logistics, not-for-profit, construction, oil and gas among others. He heads the RSM Uganda office and is also responsible for risk and compliance in Eastern Africa.

Specialisations: Audit & assurance of entities in the private and public sector and donor-funded programmes, tax services, risk advisory and internal audit, financial due diligence, outsourcing and company secretarial services.



GEORGE MUTUA

MBA, BBA, CPA (K)

Partner
Kenya

Started his career in the accountancy profession in 2006 and is experienced in audit and assurance services having handled clients in varied sectors including financial services, construction, manufacturing, trading, investment, and non-governmental organizations (NGOs). Over the years, he has gained extensive knowledge through seminars, internal trainings and on-job trainings in various areas such as audit, tax, IFRS, ISAs and IFAC guidelines.

Specialisations: Audit & assurance including statutory audits of listed companies, International Financial Reporting Standards (IFRS) guidance, revenue assurance, audit and reviews of public sector and donor-funded programmes.



JILNA SHAH

CTA (UK), FCCA

Tax Director
Kenya

Started her career in the accountancy profession in 2006 and has audit and tax experience working in Kenya and UK in various industry sectors. She has extensive experience in both direct and indirect taxes, including business restructuring. She is currently the Vice Chairperson of Public Finance Sector Board for Kenya Private Sector Alliance (KEPSA) and a member on RSM's Global Quality Committee (GQC).

Specialisations: Tax services, corporate and personal tax compliance and consulting, corporate restructuring, tax advisory, indirect taxes, transfer pricing, managing KRA audits and tax dispute resolutions.

Technical Capabilities, Awards & Achievements

- ✓ The firm's full IFRS and IFRS for SMEs Specimen Financial Statements were adopted by ICPAK as the basis of its Illustrative Financial Statements. The firm was also involved in the development of the ICPAK audit manual and model audit file.
- ✓ Ashif served on the International Audit and Assurance Standards Board (IAASB) during the Clarity Project during which all the ISAs were either re-drafted and/or revised.
- ✓ Simon was responsible for developing RSM International's IFRS for SMEs Illustrative Consolidated Financial Statements. He is also a member of ICPAK's Professional Standards Committee (PSC) and has recently completed serving two terms on the IAASB's SME Implementation Group.

Recognitions and Awards



Scan the QR code to access all our tax guides, accounting insights, and doing business guides for the region.

Key Industry Experience



Manufacturing –
retail/consumer products



Real estate & construction



Non-governmental
organisations



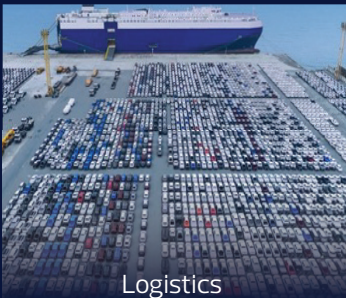
Trading



Hospitality



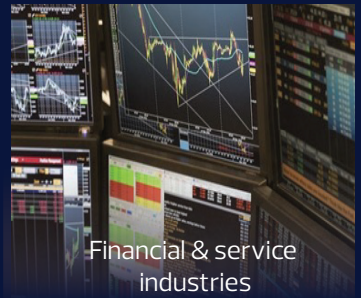
Horticulture & floriculture



Logistics



Health & education



Financial & service
industries

The RSM DNA

We are Curious

We ask probing questions and seek diverse perspectives to gain deeper understanding, challenge thinking and generate new ideas.

We are Collaborative

We believe that collaboration leads to better outcomes and we seek and share diverse perspectives to encourage innovative thinking to solve problems and enable others to seize opportunities.

We are Critical Thinkers

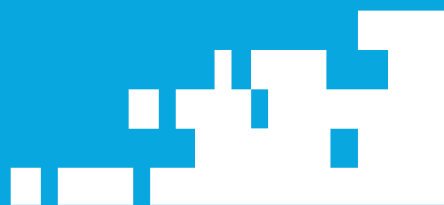
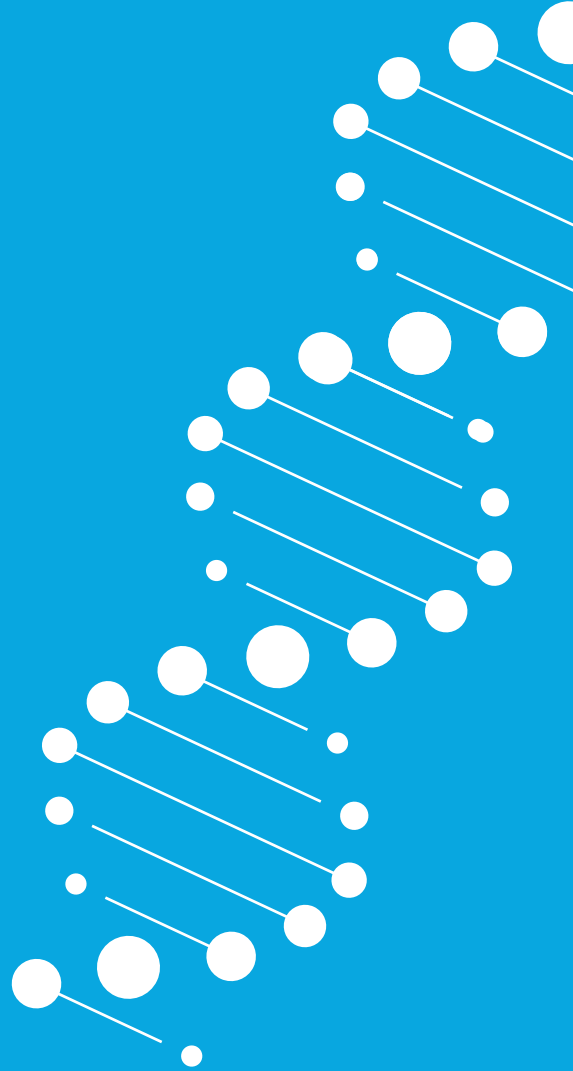
We digest, apply and communicate complex information and concepts with clarity, objectivity and depth, and bring our best thinking and advice to help others make confident decisions.

We are Caring

We build strong, long term relationships by understanding others and their aspirations and remaining empathetic to their unique challenges, needs and preferences.

We are Courageous

We demonstrate strength and confidence in challenging actions and traditional ways of thinking – having the courage to look forward and prepare for tomorrow.



NAIROBI

1st Floor, Pacis Centre,
Slip Road, off Waiyaki Way, Westlands
P.O. Box 349, 00606
Nairobi, Kenya

Tel: +254 20 3614000 / 4451747 / 8 / 9
Mobile: +254 706 347950 / 772 786111
Email: info@ke.rsm-ea.com
Website: www.rsm.global/kenya
Contact: Elvis Ogeto (Managing Partner)

KAMPALA

6th Floor, DTB Centre,
Plot 17/19, Kampala Road
P.O. Box 31704,
Kampala, Uganda

Tel: +256 414 342780
Email: info@ug.rsm-ea.com
Website: www.rsm.global/uganda
Contact: John Walabyeki (Managing Partner)

MOMBASA

Acacia Center, Mezzanine 1,
Nyerere Avenue
P.O. Box 87227, 80100
Mombasa, Kenya

Tel: +254 41 2311778 / 2312640 / 2224116
Mobile: +254 707 613329
Email: infomsa@ke.rsm-ea.com
Website: www.rsm.global/kenya
Contact: Ashif Kassam (Managing Partner)

Follow us for news and more updates on:

 RSM Eastern Africa  @RSMEasternAfrica  RSM Eastern Africa  RSM Eastern Africa