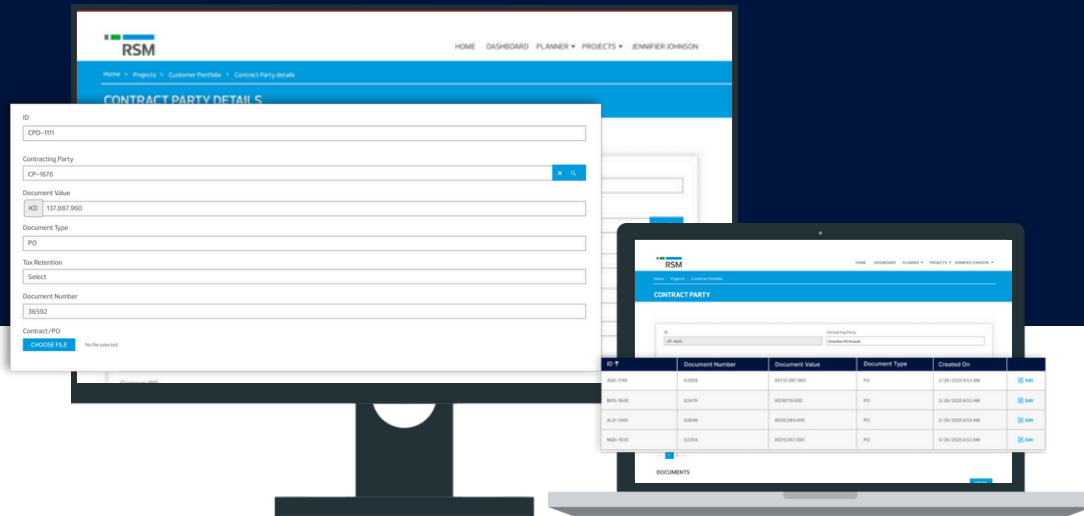


RSM Kuwait Tax Automation Tool

Streamlining Tax Compliance with Intelligent Technology



In today's rapidly evolving business landscape, tax compliance requirements continue to grow in complexity. At RSM Kuwait, we understand that managing tax compliance obligations can be time-consuming and resource-intensive for businesses of all sizes. Hence, we've developed our Tax Automation Tool – a purpose-built solution that combines technological innovation using AI with our tax expertise to simplify and enhance the tax compliance process.

The RSM Kuwait Tax Automation Tool addresses common challenges in tax return preparation and inspection process through a streamlined, and intelligent platform that reduces manual effort while improving accuracy, efficiency and effectiveness.

The Challenge

For many businesses operating in Kuwait, tax compliance involves:



Time-consuming manual data review and document handling.



Effort in matching ledger entries with supporting documents



Calculations for tax return preparation.



Limited visibility for client senior management into the entire tax process.



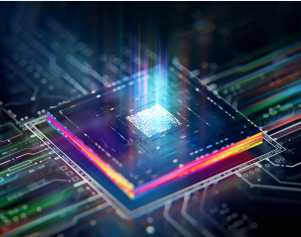
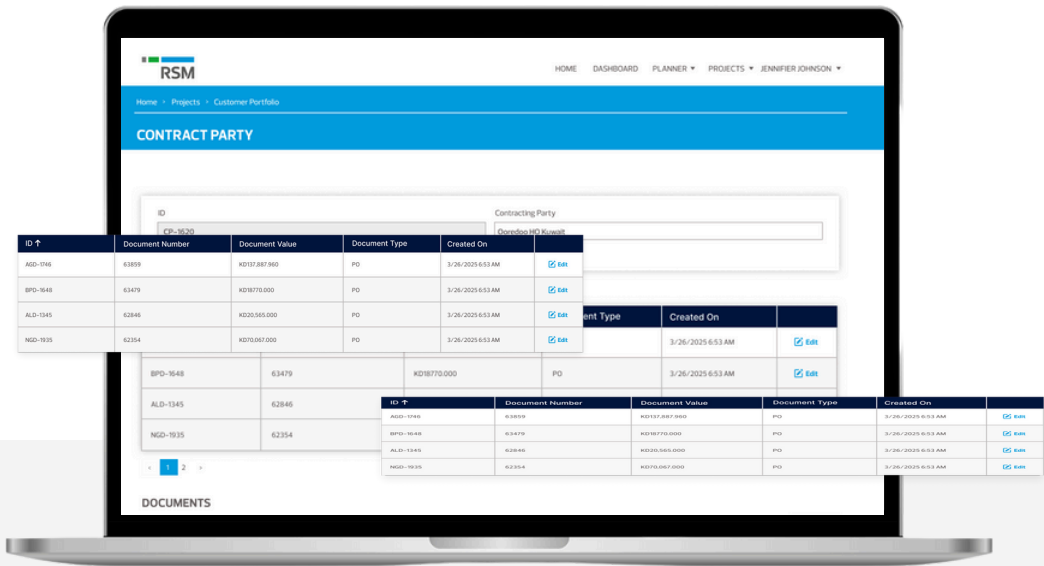
Resource-intensive document management and verification



Tax inspection process while reviewing sizable transactions and related supporting documents

Our Solution: The Tax Automation Tool

RSM Kuwait's Tax Automation Tool is a specialized platform designed to simplify tax compliance through intelligent automation. The solution integrates seamlessly with our RSM Kuwait Engage portal, providing clients with a user-friendly interface to manage tax compliance efficiently.



AI Integration at the Core

At the heart of our Tax Automation Tool lies advanced artificial intelligence technology that transforms the entire tax process. Our system uses:



Natural Language Processing (NLP) to interpret and extract relevant information from documents



Computer Vision and OCR to accurately read physical and digital documents regardless of format



Machine Learning Algorithms that continuously improve documents and information matching / validating accuracy



Pattern Recognition to identify inconsistencies and anomalies.



Foreign Currency: Auto translate foreign currencies to Kuwaiti Dinars.



Referencing: Create auto reference and cross reference between amounts to ease inspection process.

Key Features

Centralized Document Management



Secure client portal through RSM Kuwait Engage



Simple upload interface for financial documents



Support for multiple file formats including .doc, .docx, .pdf, .txt, and .xlsx, .html and images.

AI-Powered Document Processing



Sophisticated OCR technology reads and processes various document formats (.doc, .docx, .pdf, .txt, and .xlsx, .html and images).



AI tools validate the supporting documents with the uploaded ledger entries.

Automated Calculation System



Standardized the entire tax process methodology



Consistent calculation framework



Automatic application of appropriate tax rate

Transparent Workflow



Real-time visibility into the tax process



Clear document status tracking



Seamless communication between clients and RSM Kuwait teams

Comprehensive Security



Role-based access controls



Secured login environments

Communication



Standardized consistent email communication.



Event / task triggered auto email communication



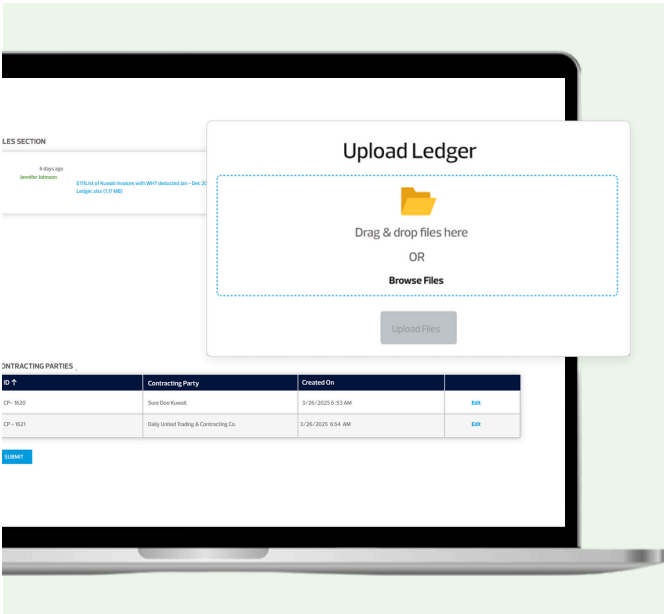
Timely auto generated email communication of key matters



Auto email reminder for key decisions

How It Works

The RSM Kuwait Tax Automation Tool follows a straightforward workflow:



Client Document Upload



Clients log in to the RSM Kuwait Engage portal with their credentials.



Upload documents including ledger, invoices, receipts, bank related documents, contracts, purchase orders, etc.



All common file formats are accepted without conversion requirements.

AI-Driven Processing



System automatically reads the ledger uploaded by the client and populate the database.



OCR technology extracts relevant data, even from handwritten or scanned documents.



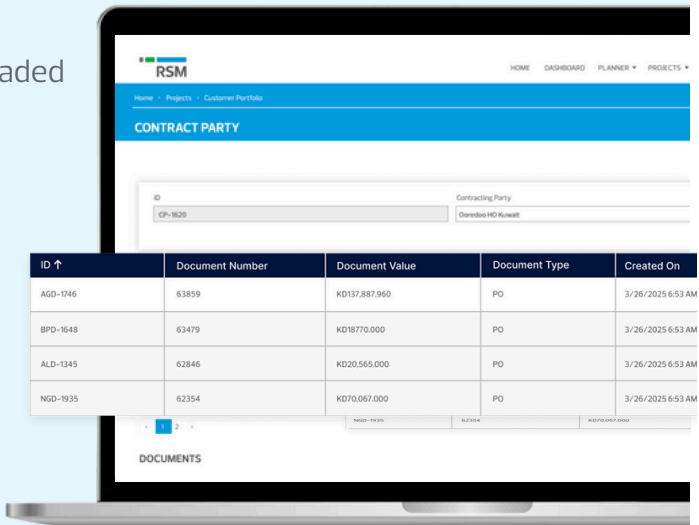
AI tools embedded in the application validates invoices with ledger entries and receipts with bank statements.



The system intelligently flags any inconsistencies or missing information.



AI performs data validation across multiple documents to ensure data consistency.



For example, the tool flags mismatches between ledger entries and scanned invoices where invoice dates and amounts didn't align with the ledger. This early detection improves the efficiency / timely communication between RSM Kuwait Tax Team and the client.

Intelligent Taxable Profit Calculation



The system will use the average exchange rate for the taxable period as per the Central Bank of Kuwait to convert different currencies used by the company to KD, which is in accordance with the Kuwait Income Tax Practice.



The tool automatically applies the standard 5% retention rate.



Tax liability is calculated based on AI-validated data.



Calculations follow consistent methodologies for reliability.

Document Number	Document Value	Document Type
63859	KD137,887.960	PO
63479	KD18770.000	PO
62846	KD20,565.000	PO
62254	KD70,067.000	PO

Automated Report Generation



Tax reports are generated automatically.



Reports are structured for easy review and submission.



All calculations are clearly documented with source references.

File	Type	Created On &	Documents
Untitled	Invoice	3/26/2025 7:10 AM	Edit
Untitled	Receipt voucher	3/26/2025 7:08 AM	Edit
Untitled	Receipt voucher	3/26/2025 7:08 AM	Edit
Untitled	Invoice	3/26/2025 7:07 AM	Edit
Untitled	Invoice	3/26/2025 7:07 AM	Edit
Untitled	Invoice	3/26/2025 7:07 AM	Edit

Expert Review



RSM Kuwait tax professionals review AI-generated calculations.



Any issues identified are addressed immediately.



Final tax returns are approved and delivered to clients.

HOME DASHBOARD PLANNER PROJECTS JENNIFER JOHNSON

Username

Password

LOGIN

Forgot Password?

Benefits to Clients



Efficiency

- Reduced manual data entry and processing time
- Streamlined document management
- Faster tax preparation and filing



Accuracy

- Minimized human error through automation
- Consistent calculation methodology
- Thorough validation of data



Transparency

- Clear visibility into the tax calculation process
- Real-time status updates
- Document / data audit trail, reference and cross reference



Convenience

- User-friendly interface
- 24/7 access to the portal
- Support for all file formats
- No need for paper documents

The Power of AI in Tax Compliance

Our Tax Automation Tool demonstrates how artificial intelligence transforms the entire tax process:



Document Intelligence

AI extracts information from documents with near-human accuracy while processing at machine speed



Contextual Understanding

The system understands relationships between different documents.



Difference/Errors / Anomalies

AI identifies discrepancies that might be missed in manual reviews



Consistency

Ensures that tax calculations follow the same methodology.



Continuous Improvement

Our AI systems learn from each interaction, becoming more efficient & effective over time.



RSM Kuwait's Commitment to Innovation

At RSM Kuwait, we believe that the most effective solutions combine cutting-edge technology with human expertise. Our Tax Automation Tool represents this balance – leveraging AI and automation to handle routine tasks while our tax professionals focus on judgement, client interaction and value addition.

We continuously refine our technology based on client feedback and regulatory changes to ensure that our solutions remain relevant and effective. This commitment to innovation enables us to provide clients with tools that not only address today's challenges but are also adaptable to future requirements.

By combining technological innovation with deep tax expertise, RSM Kuwait continues to enhance the client experience while maintaining the highest standards of professional service.

We view technology as a powerful tool that amplifies our ability to deliver exceptional service.

Empowering Progress Through Technology and Expertise

At RSM Kuwait, we combine professional insight with a connected technology platform to support collaboration, enhance decision-making, and deliver added value across all engagements.

Contact Us

RSM Albazie & co. (RSM Kuwait)

Arraya Tower 2, Floors 41 & 42
Abdulaziz Hamad Alsaqar Street, Sharq
P.O. Box 2115, Safat 13022
State of Kuwait



Website

www.rsm.global/kuwait



EMAIL

connect@rsm.com.kw



TEL

+965 22961000



WhatsApp

22410010

RSM Albazie & Co. is a member of the RSM network and trades as RSM. RSM is the trading name used by the members of the RSM network. Each member of the RSM network is an independent accounting and consulting firm each of which practices in its own right. The RSM network is not itself a separate legal entity of any jurisdiction.

The network is administered by RSM International Limited, a company registered in England and Wales (company number 4040598) whose registered office is at 50 Cannon Street, London EC4N 6JJ. The brand and trademark RSM and other intellectual property rights used by members of the network are owned by RSM International Association, an association governed by article 60 et seq of the Civil Code of Switzerland whose seat is in Zug.

© RSM Albazie & Co., 2025

