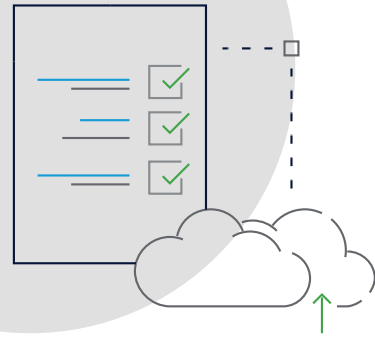


ROADMAP



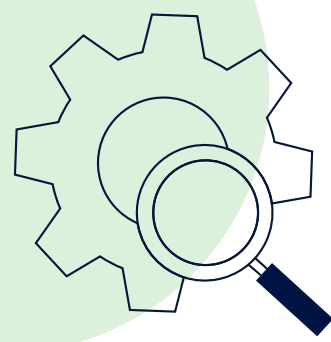
Enhancements to the mechanism for generating JPK_V7, JPK CIT and JPK_KR declarations, and support for JPK_KR_ST

- Tenfold acceleration of the declaration generation process compared to currently used mechanisms
- JPK_CIT – introduction of a mapping mechanism for tax and reporting tags, automatic generation of the income tax section
- JPK_KR_ST – launch of new mandatory reporting based on entries from the Fixed Assets module
- Support for reporting receivables according to payment deadlines



Improvements in the SuiteTax area

- Optimisation of the VAT posting and calculation process through the use of native SuiteTax mechanisms
- Enhancements to ensure compliance of the Polish Localization Package with the SuiteTax mechanism

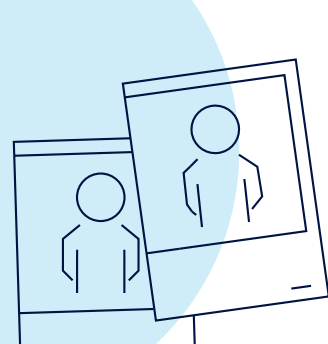
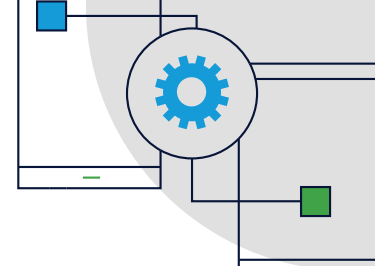


Improvements in processes related to bad debt relief

- Introduction of an automatic mechanism for managing bad debt provisions (creation and reversal of provisions)
- Minimisation of the risk of errors in the process of creating and reversing bad debt provisions

Optimisation of the automatic transaction numbering mechanism

- Extension of the autonumbering mechanism using native Oracle NetSuite functions
- Expansion of the new mechanism to cover a wider range of transactions and document generation modes, including support for reversal entries

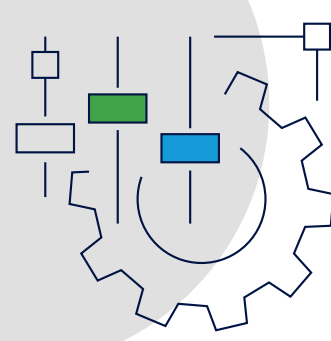
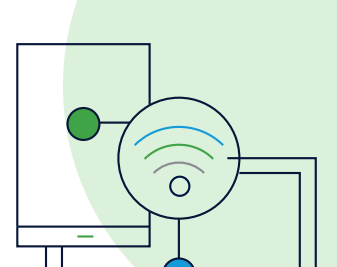


Launch of the User Portal

- Provision of a dedicated portal for users of the Polish Localization Package with detailed descriptions of individual functionalities
- Ensuring quick access to up-to-date documentation of the localisation package

Implementation of Incoming Document Management for KSeF

- Automatic generation of accounting documents and cost reports
- Handling of links between documents and purchase orders
- Verification of XML file compliance with the generated purchase document
- Ability to preview invoices and manage import options
- Generation of employee-type documents in the case of employee settlements



Development of functionalities for integration with external tools

- Introduction of improvements to the connector for Stripe and Saldeo (including management of record synchronisation, ability to customise the interface to client requirements, automatic handling of payment documents)
- Creation of a connector for Pagarero enabling synchronisation of records and transactions
- Development of integration in the area of payment and banking applications (launch and optimisation of the interface for downloading bank statements, automation of payment file dispatch, support for new banking formats)
- Extension of integration management capabilities from the configuration level, enabling changes without the need to commission programming work