

RSM Switzerland

A partner at your side

A blue rectangular banner with the text "CYBERSHIELD ACADEMY" in white, bold, sans-serif capital letters.

CYBERSHIELD ACADEMY

CyberShield Academy

1. Who We Are

We deliver comprehensive cybersecurity solutions designed to help organizations build robust defences against ever-evolving threats. Our approach emphasizes education, preparedness, and policy standardization—helping you safeguard your digital assets while enhancing your team's security awareness.

Did You Know?

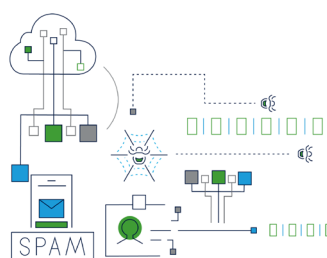
- 82% of data breaches involve a human element—such as errors, misuse, or social engineering tactics—according to the Verizon 2022 Data Breach Investigations Report.¹
- Organizations that implement regular cybersecurity awareness training can reduce phishing susceptibility by up to 75%, as shown in a study by KnowBe4.²
- A 2024 survey by Hornet security revealed that 78.5% of organizations believe IT security awareness training directly prevented cybersecurity incidents.³
- Research published in the ISACA Journal indicates that companies can achieve a return on investment (ROI) of up to 500% from implementing cybersecurity awareness programs—especially in large organizations.⁴

2. Our Core Services

We offer a centralized platform to elevate cybersecurity awareness across your organization. Our system tracks employee engagement and progress in key areas of IT security.

Platform Features

- ✓ Cybersecurity Awareness Training
- ✓ Phishing Simulations
- ✓ Dark Web Breach Monitoring
- ✓ Policy Management & Tracking



¹ Keepnet Labs. (2024, January 23). *2025 Security awareness training statistics*. <https://keepnetlabs.com/blog/security-awareness-training-statistics>

² KnowBe4. (2011, July 11). *New KnowBe4 statistics reveal security awareness training reduces phishing susceptibility by 75%*. <https://www.knowbe4.com/press/security-awareness-training-reduces-phishing-susceptibility-by-75>

³ Hornetsecurity. (2024, June 3). *Security awareness survey: 1 in 4 (25.7%) organizations do not provide I.T. security awareness training*. <https://www.hornetsecurity.com/en/blog/security-awareness-survey-2024/>

⁴ Bhaskar, R. (2022, May 18). *Better cybersecurity awareness through research*. ISACA Journal, 2022(3). <https://www.isaca.org/resources/isaca-journal/issues/2022/volume-3/better-cybersecurity-awareness-through-research>

RSM Switzerland AG is a member of the RSM Network and trades as RSM. RSM is the trading name used by the members of the RSM Network. Each member of the RSM Network is an independent assurance, tax and consulting firm each of which practices in its own right. The RSM network is not itself a separate legal entity of any description in any jurisdiction.

The RSM Network is administered by RSM International Limited, a company registered in England and Wales (company number 4040598) whose registered office is at 50 Cannon Street, London EC4N 6JJ. The brand and trademark RSM and other intellectual property rights used by members of the Network are owned by RSM International Association, an association governed by article 60 et seq of the Civil Code of Switzerland whose seat is in Zug.

CyberShield Academy

3. Our Packages

We provide these services through three tailored packages, with optional add-ons to fit your specific industry or business needs (Appendix 1).

01

Starter – Cost Upon Request

- ✓ Platform Setup
- ✓ Standard Phishing Campaign
- ✓ Standard Training Modules
- ✓ Basic Breach Monitoring
- ✓ Policy Storage & Tracking
- ✓ Monthly Automated Reports

Annual License Fee Applies
(less than 2 CHF per user per month)

02

Standard – Cost Upon Request

- ✓ Includes all Starter features, plus:
- 2 Personalized Phishing Simulations based on your company's sector and employee roles

Annual License Fee Applies

03

Premium – Cost Upon Request

- ✓ Includes all Standard features, plus:
- Advanced Breach Monitoring (Breach Pro)
- 1-Hour Quarterly Report Debrief with an Expert

Annual License Fee Applies

4. Optional Add-Ons (EXTRAS) – Cost Upon Request

In-Person Training (4-Hour Session) (Appendix 2)

- ✓ Tailored Programs: Customized to your industry and team needs.
- ✓ Expert Instructors: Led by seasoned cybersecurity professionals.
- ✓ Topics Include:
 - ✓ Cyber Hygiene Best Practices
 - ✓ Social Engineering Awareness
 - ✓ Secure Password Management
 - ✓ Incident Response Procedures

CyberShield Academy

Custom Phishing Simulations

- ✓ Designed around your business sector and employee workflows.
- ✓ Includes targeted emails, landing pages, tracking, and analysis.

Policy Writing & Deployment

- ✓ Identify policy needs based on best practices and standards (e.g., ISO 27001).
- ✓ Co-develop and validate policies with leadership.
- ✓ Distribute policies and track employee acknowledgment.

SSO Integration Support

- ✓ Coordinate with your IT team or third-party providers to implement Single Sign-On (SSO) across platforms.

5. Why Choose Us?

- ✓ 20+ Years of Expertise in Cybersecurity
- ✓ End-to-End Services from Prevention to Response
- ✓ Scalable Solutions for SMBs to Enterprises
- ✓ Proven Impact: Reduced phishing incidents, improved compliance, and lower insurance premiums

CONTACT US!

Scan this QR code and contact us directly on our website.



ABOUT RSM

RSM Network

120 countries connected, a homogeneous approach with high added value

Whichever the country in which you operate may be, you have access to the whole RSM network. Our teams commit to the consistent quality of their projects in order to bring trust and security into your operations.

A single point of contact and unique partner

We know that your time is precious. Your unique contact point at a high level is the relay of your needs at the heart of the network. It can make exchanges flow more smoothly, mobilise the local or international skills necessary whatever the destination of your ambitions may be

A variety of skills for tailored-made solutions

Together, we make our best skills, expertise and our sectorial knowledge available to you in order to help you reach your objectives. This expertise can help you enhance your business efficiency, reduce costs, control risks and become more competitive.



65,000
People worldwide



900
Offices



120
Countries

6%
Revenue
growth in 2024
to US\$ 10bn

RSM Switzerland – A human scale approach for a local and global delivery

RSM in Switzerland has chosen to have a targeted presence in the country's main economic centres with offices and teams structured to cover the entire territory, both geographically and linguistically.

- 1** NATIONAL ENTITY
- 3** OFFICES
- 12** PARTNERS
- 130+** PEOPLE



GENEVA | LAUSANNE | ZURICH

LIST OF THE AVAILABLE PACKAGES AND FEES (APPENDIX 1)

	Offer			
	Starter	Standard	Premium	Extra
Set-up	x	x	x	-
Phishing	x	x	x	-
Training	x	x	x	-
Breach Check	x	x	x	-
Policy Storage	x	x	x	-
Monthly Automated Report	x	x	x	-
Annual Licenses Follow-up	x	x	x	-
2 Personalized Phishing related to employee activities/company sector	-	x	x	-
Breach Pro Insight	-	-	x	-
1h report debrief per quarter	-	-	x	-
In person training Half day	-	-	-	Upon request
Personalized Phishing relate to employee activities/company sector	-	-	-	Upon request
Policy writing	-	-	-	Upon request
SSO connexion	-	-	-	Upon request
TOTAL	Upon request	Upon request	Upon request	

CYBERAWARENESS TRAINING PLAN (APPENDIX 2)

	Start Time	End Time	Period
Welcoming	8:30	9:00	0:30
Introduction <ul style="list-style-type: none"> • Trainer introduction and icebreaker • Training goals & expectations • Agenda walkthrough 	9:00	9:15	0:15
Cyber Threat Landscape <ul style="list-style-type: none"> • Why cybersecurity matters (real-world impact) • Common cyber threats: <ul style="list-style-type: none"> ◦ Phishing ◦ Malware & ransomware ◦ Social engineering ◦ Insider threats • Threat trends and evolving risks 	9:15	9:45	0:30
Phishing & Social Engineering <ul style="list-style-type: none"> • How phishing works (email, SMS, voice) • Social engineering tactics and examples • How to detect and report phishing 	9:45	10:15	0:30
Break 1	10:15	10:30	0:15
Passwords, MFA & Account Security <ul style="list-style-type: none"> • Secure password practices • Password managers: how and why • Importance of MFA and how it works • Account recovery traps 	10:30	11:00	0:30
Data Privacy & Protection <ul style="list-style-type: none"> • What is sensitive data? • Data classification & labelling • Legal overview (GDPR, local laws) • How to protect data at work and on the go 	11:00	11:30	0:30
Break 2	11:30	11:45	0:15
Secure Remote Work & Device Security <ul style="list-style-type: none"> • Working from home securely • Using public Wi-Fi safely • Device encryption, USBs, mobile phones • BYOD policies 	11:45	12:15	0:30
Incident Reporting, Q&A, Wrap-up <ul style="list-style-type: none"> • How to report suspicious activity • Incident response overview 	12:15	12:30	0:15
Recap of Takeaways	12:30	12:40	0:10
Final quiz	12:40	13:00	0:20
Q&A + Conclusion	13:00	13:15	0:15
TOTAL			4:45