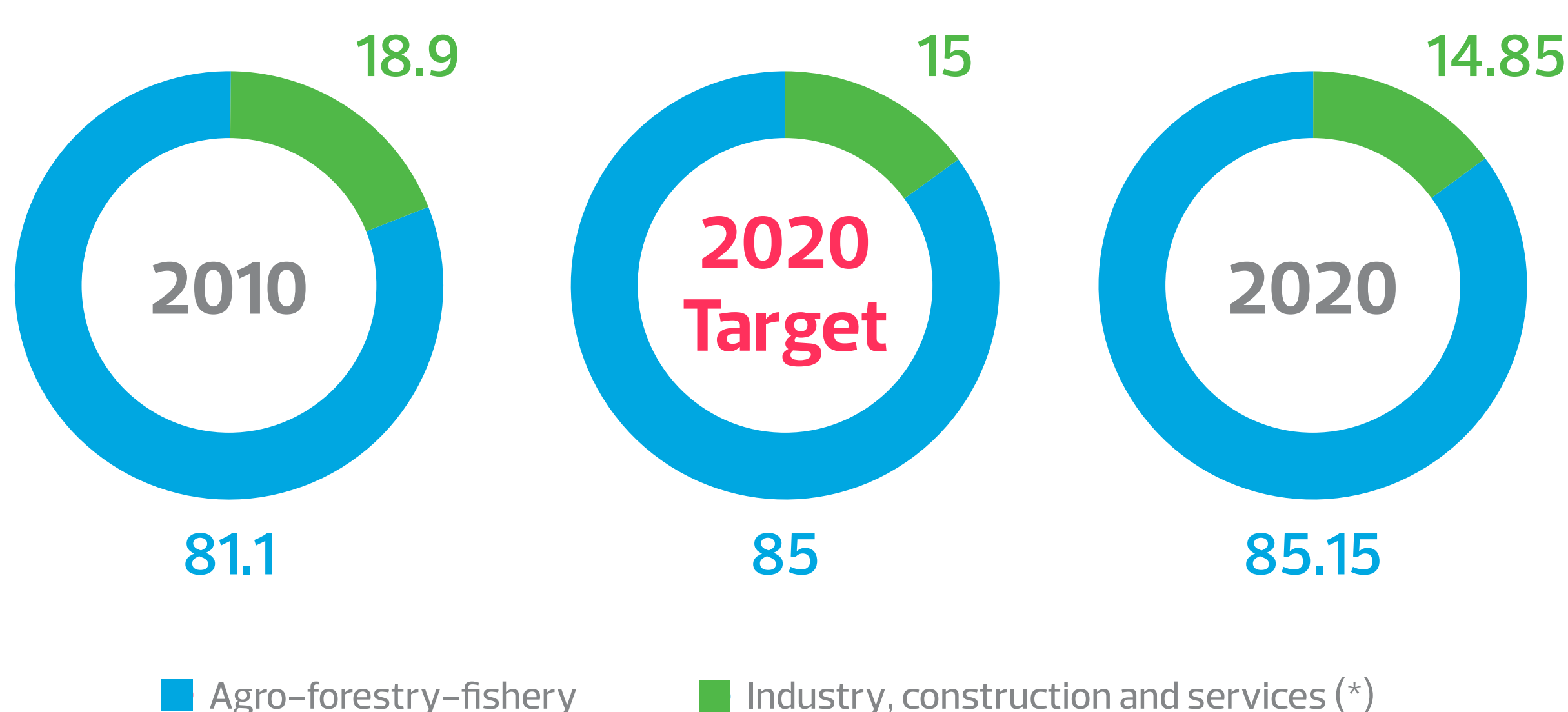


10

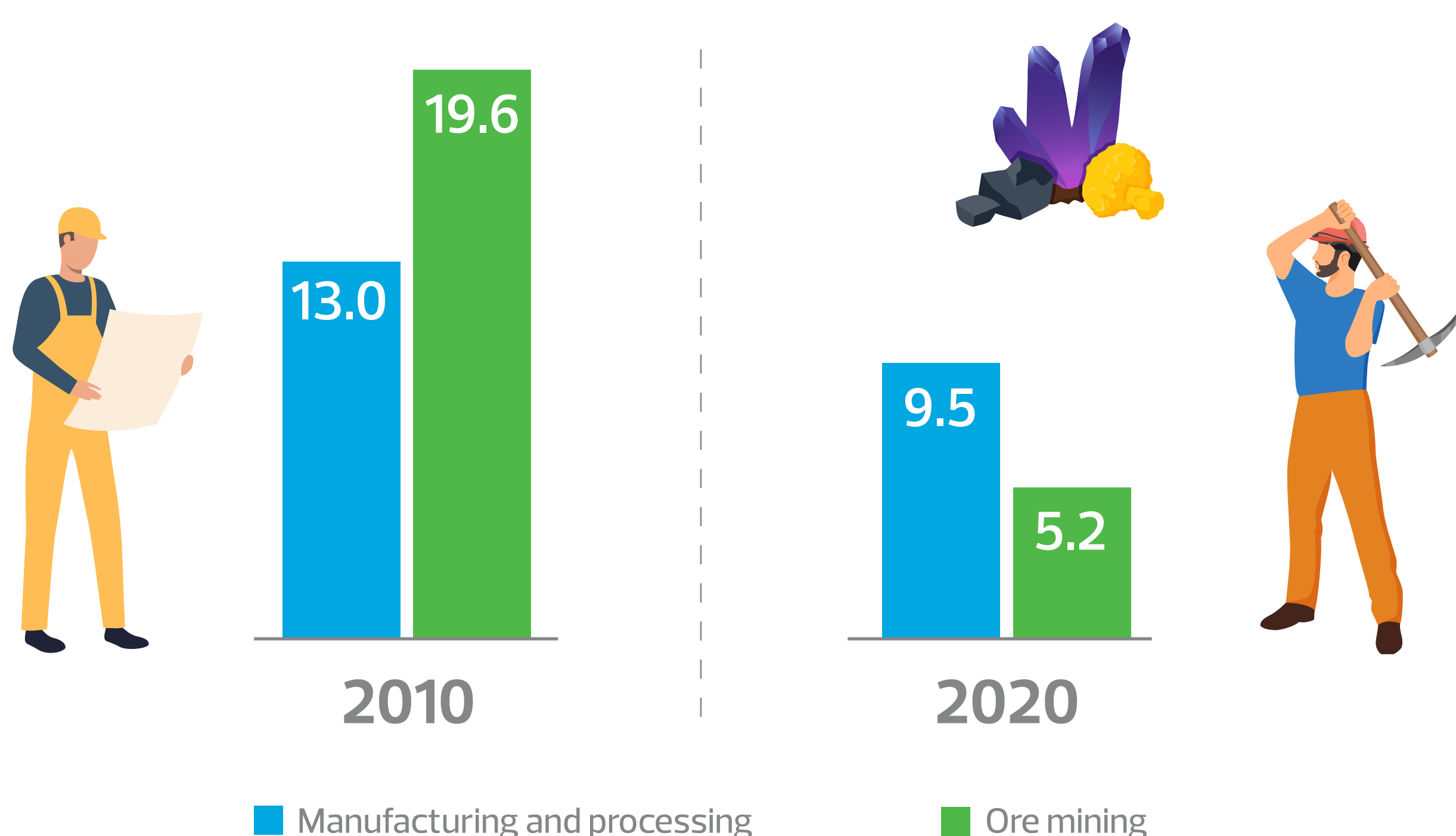
YEARS IMPLEMENTING SOCIO-ECONOMIC DEVELOPMENT STRATEGY FOR 2011-2020

POSITIVE CHANGES IN ECONOMIC STRUCTURE

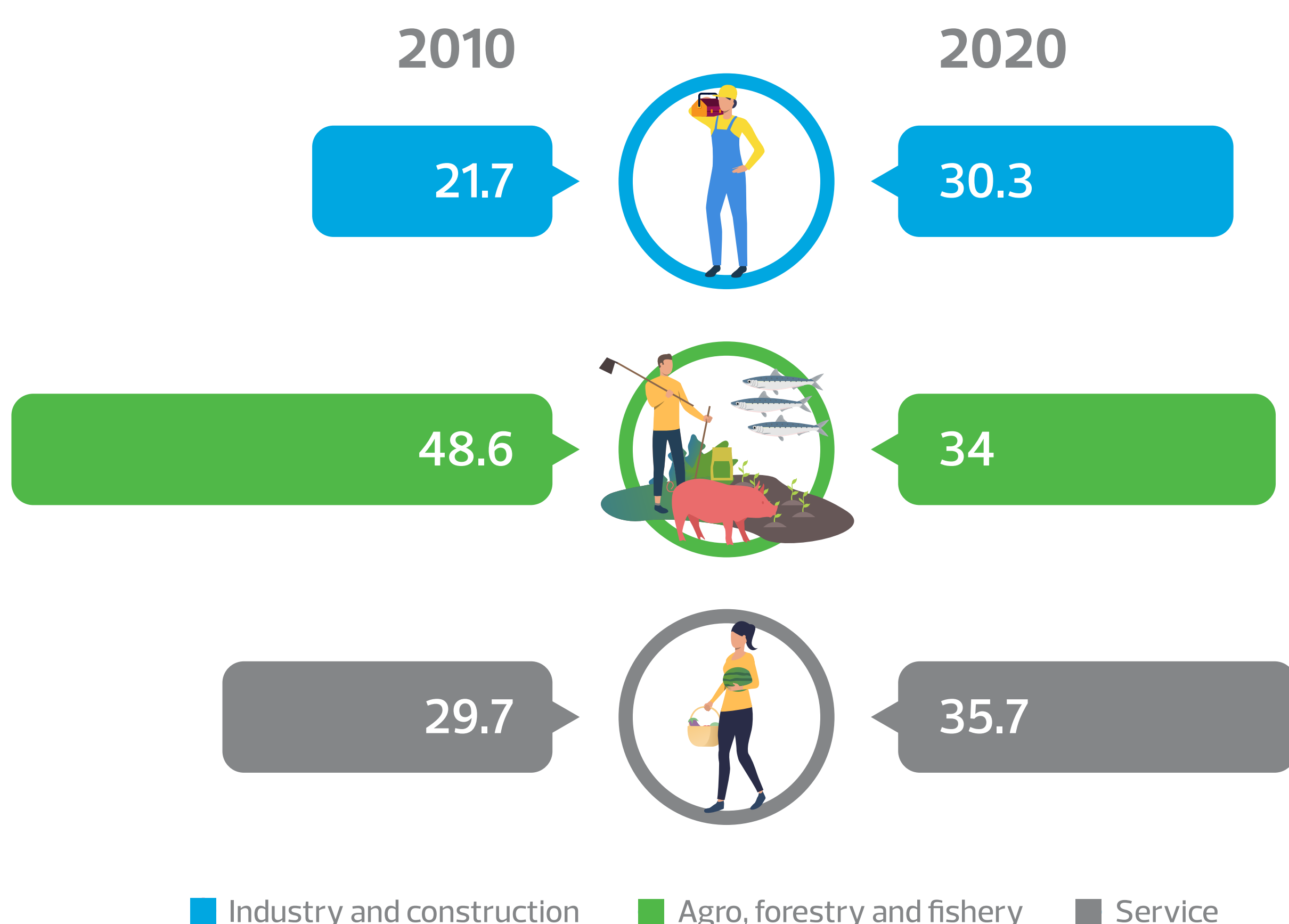
GDP STRUCTURE (%)



PROPORTION OF INDUSTRY AND CONSTRUCTION SECTORS IN GDP (%)



DISTRIBUTION OF LABOURERS BY ECONOMIC SECTORS (%)



Source: Draft report on the implementation of 10-year strategy for socio-economic development from 2011-2020 and developing 10-year strategy for socio-economic development from 2021-2030 by the 12th Party Central Committee; Report on Socio-economic situation of Quarter 4 in 2020 and the whole year of 2020 (the General Statistics Office)