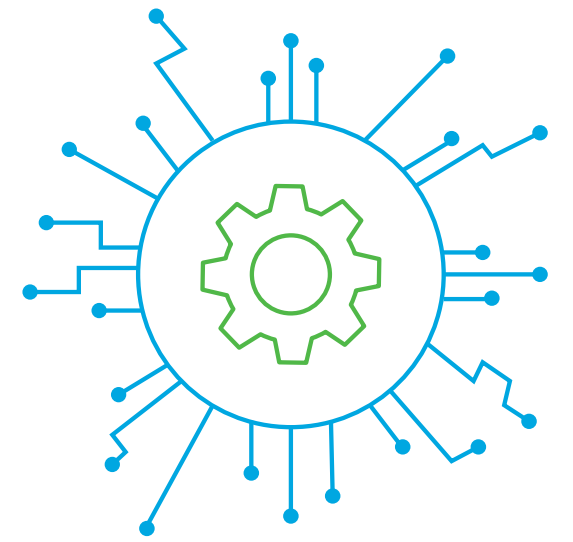


# 4 REGULATIONS TO SUPPORT small and medium enterprises

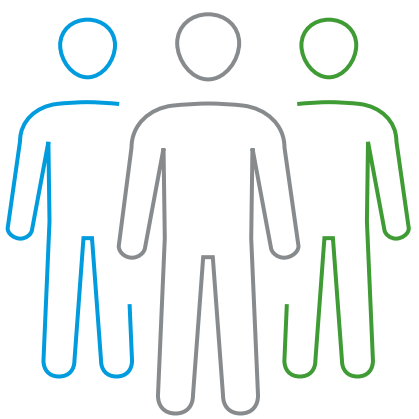
On 10<sup>th</sup> May 2022, the Ministry of Planning and Investment issued Circular 06/2022 guiding Decree 80/2021 on supporting small and medium enterprises (SMEs).

## 1 Support for technology

- Support the cost of renting and purchasing digital transformation solutions
- Assess readiness for digital transformation to propose appropriate support
- Agencies and organizations that support SMEs use the results of the assessment of the level of digital transformation to consider support following the receiving capacity of SMEs



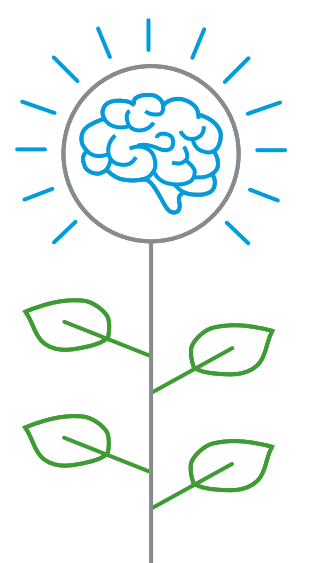
## 2 Support for human resource development



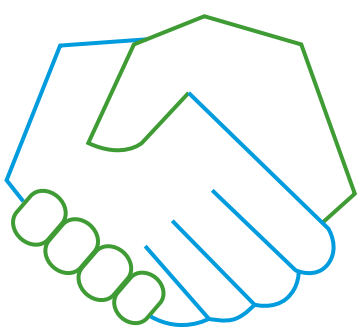
- Directly training in corporate governance including basic and in-depth corporate governance training courses
- Online training courses by available online teaching tools and platforms

## 3 Support for innovative startup SMEs

- Support trainees from the SMEs to participate in domestic and foreign incentive training
- Support for account maintenance on e-commerce platforms
- Support for participation in international competitions on innovative startup



## 4 Support for SMEs engaged in production-processing industrial clusters, value chains



- Associate in the form of a joint purchase of input materials, a joint sale of products...

**This Circular takes effect from 25<sup>th</sup> June 2022.**